



Installing a Dell Laser Printer on an Ubuntu Operating System

Article Summary: This article provides information on "Installing a Dell Laser Printer on an Ubuntu Operating System".

Table of Contents:

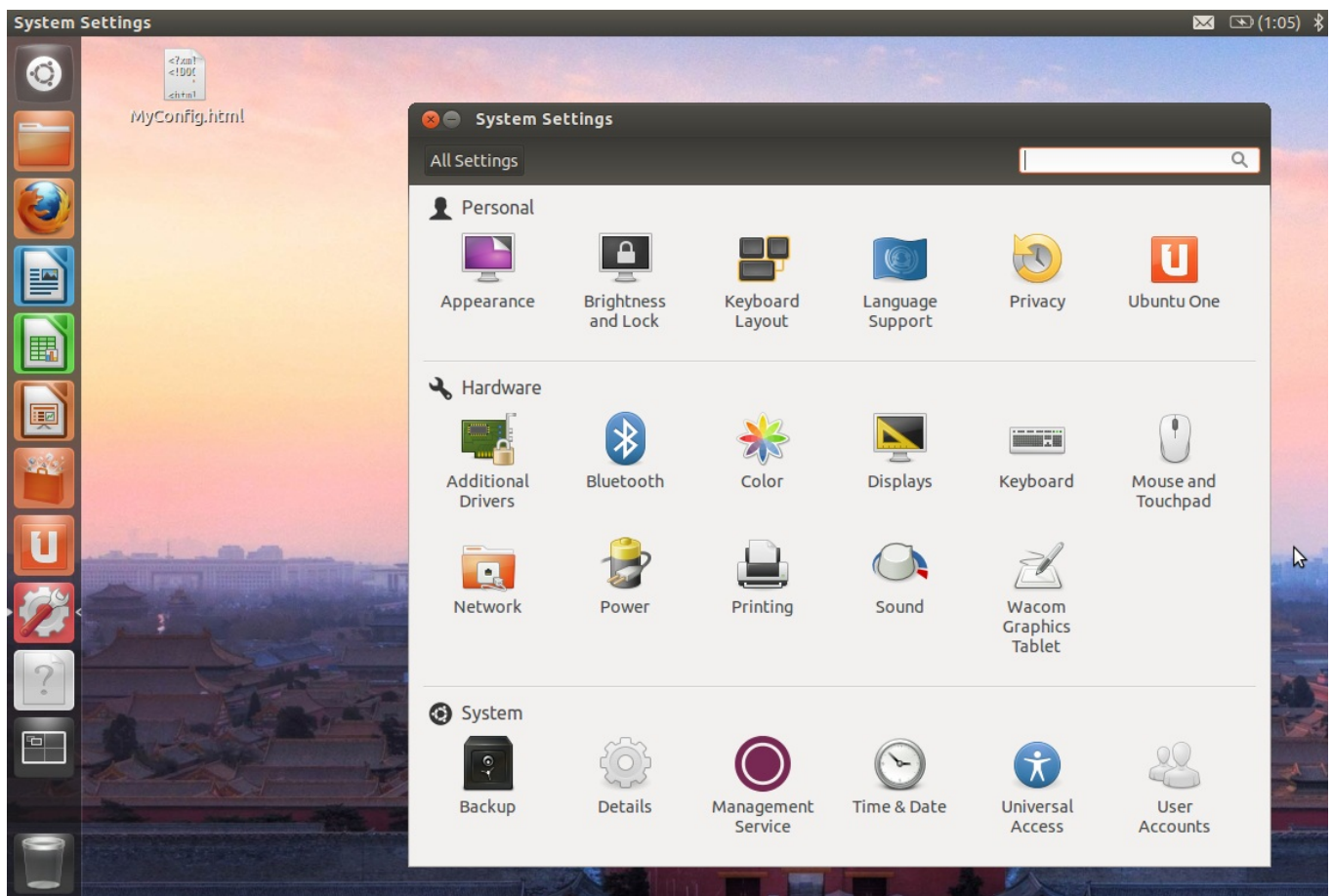
1. Installing a Dell Laser Printer on an Ubuntu Operating System

1. Installing a Dell Laser Printer on an Ubuntu Operating System

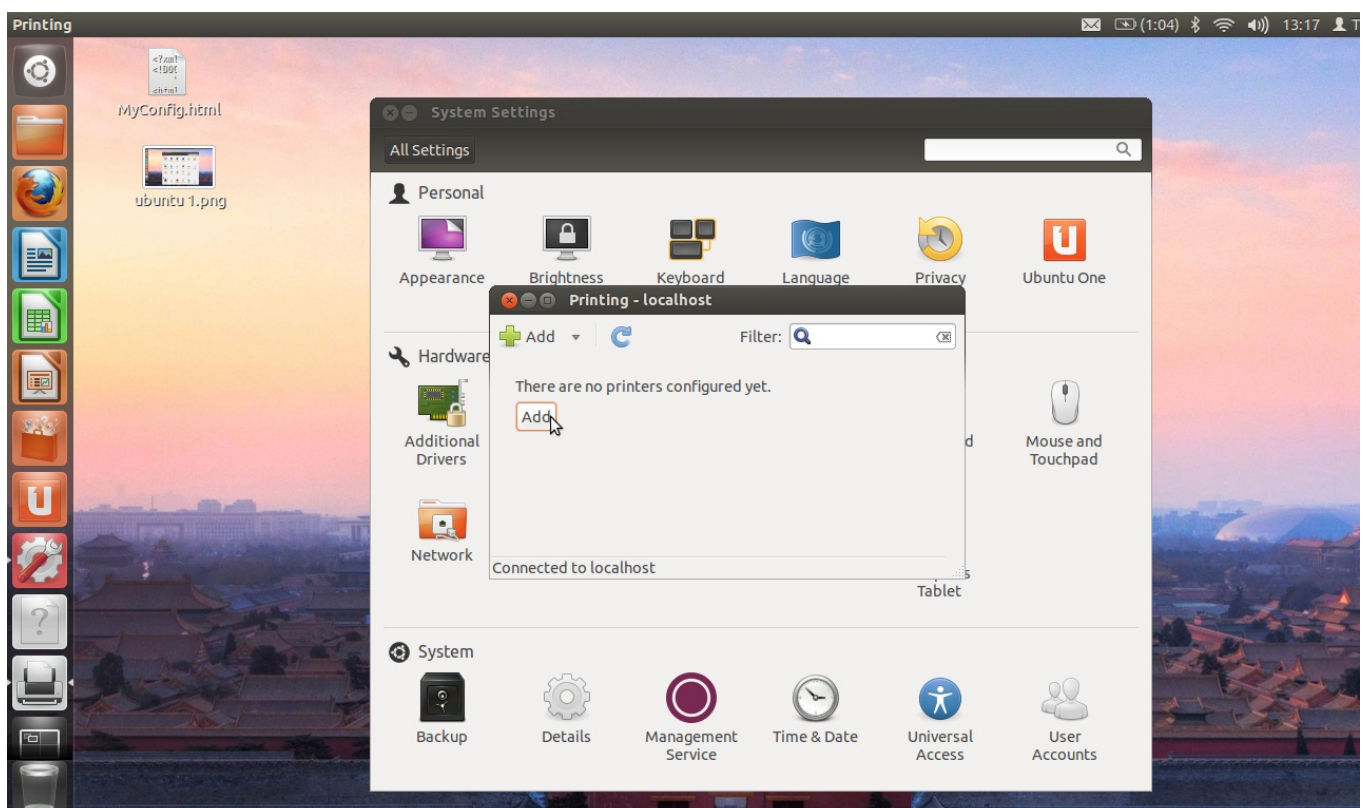
The Ubuntu Operating system is not supported on all models of Dell Laser Printer. Please use the Printer's User Guide (<http://www.dell.com/support/article/SLN153505/en>) to determine whether your model of Laser Printer is supported.

In order to install a Dell Printer on this OS, please use the generic Postscript Driver, as described below:

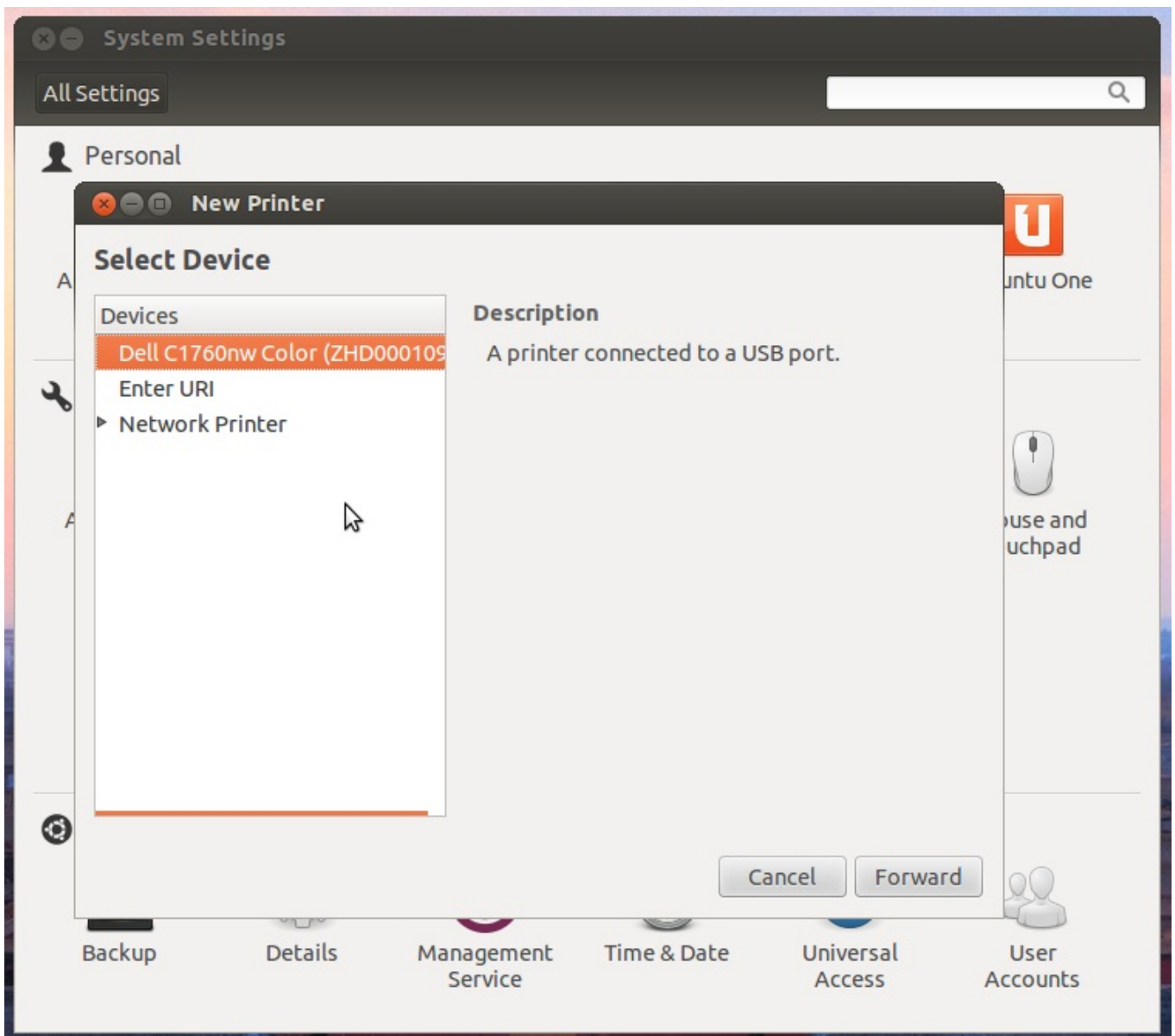
1. Plug the USB Cable in and turn on the Printer
2. Click on System Settings, then the Printing Icon



3. In the Printer configuration window click Add.



4. The New Printer window will automatically start searching for any connected printers. If directly connected it should show up in the Devices list on the left.



5. Once you find the appropriate printer in the Device menu click Forward.

6. The system will now search for the correct Driver. It will not automatically find the Driver, you must use the menu to point the system to the generic PPD File

7. Make sure the 'Select Printer from Database' option is selected

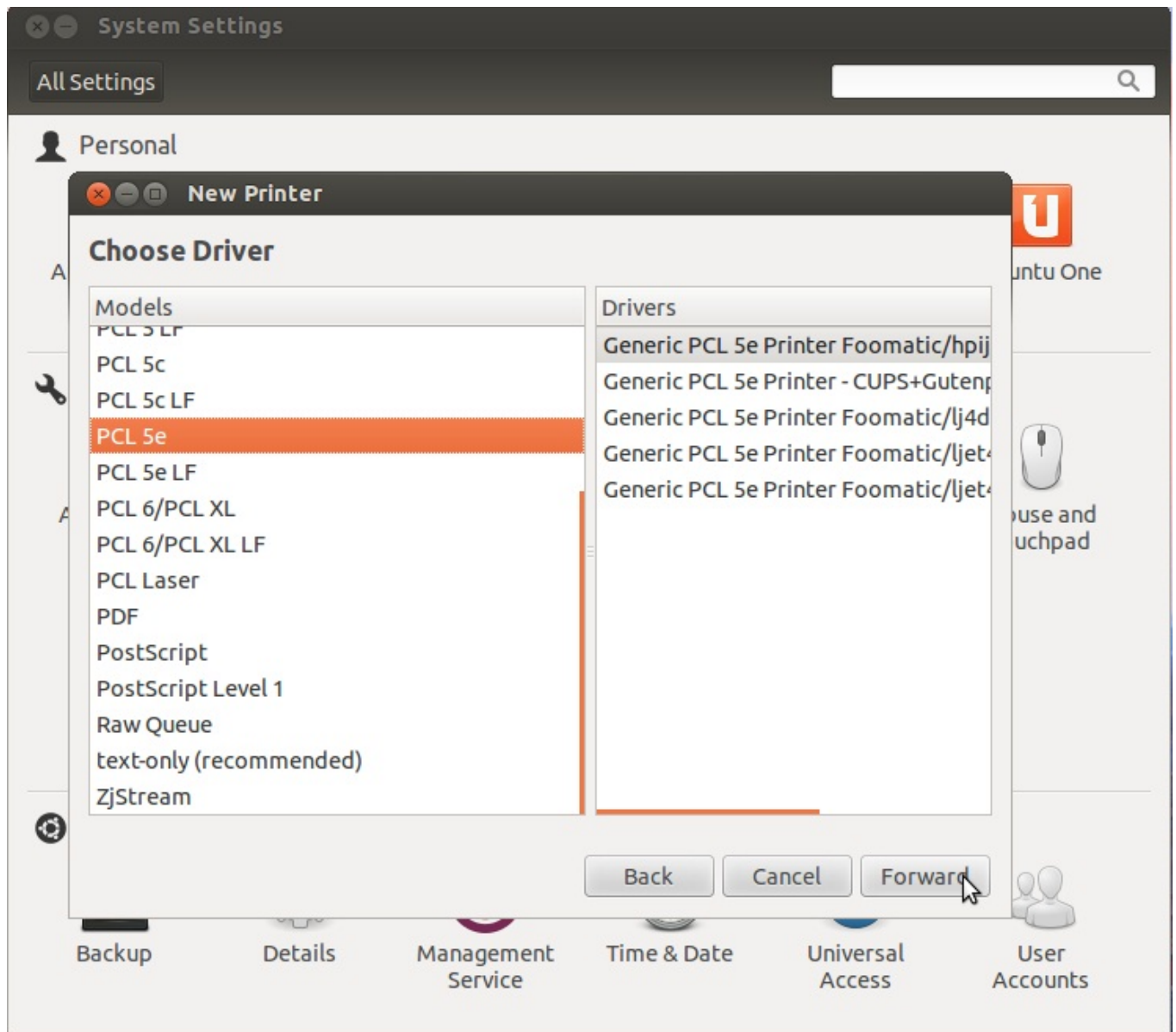
8. Highlight the 'Generic' setting

Click Forward

9. Select the generic driver you wish to use (use the [User Guide](http://www.dell.com/support/article/SLN153505/en) <http://www.dell.com/support/article/SLN153505/en> for the specific Printer to verify the Driver option your printer supports)

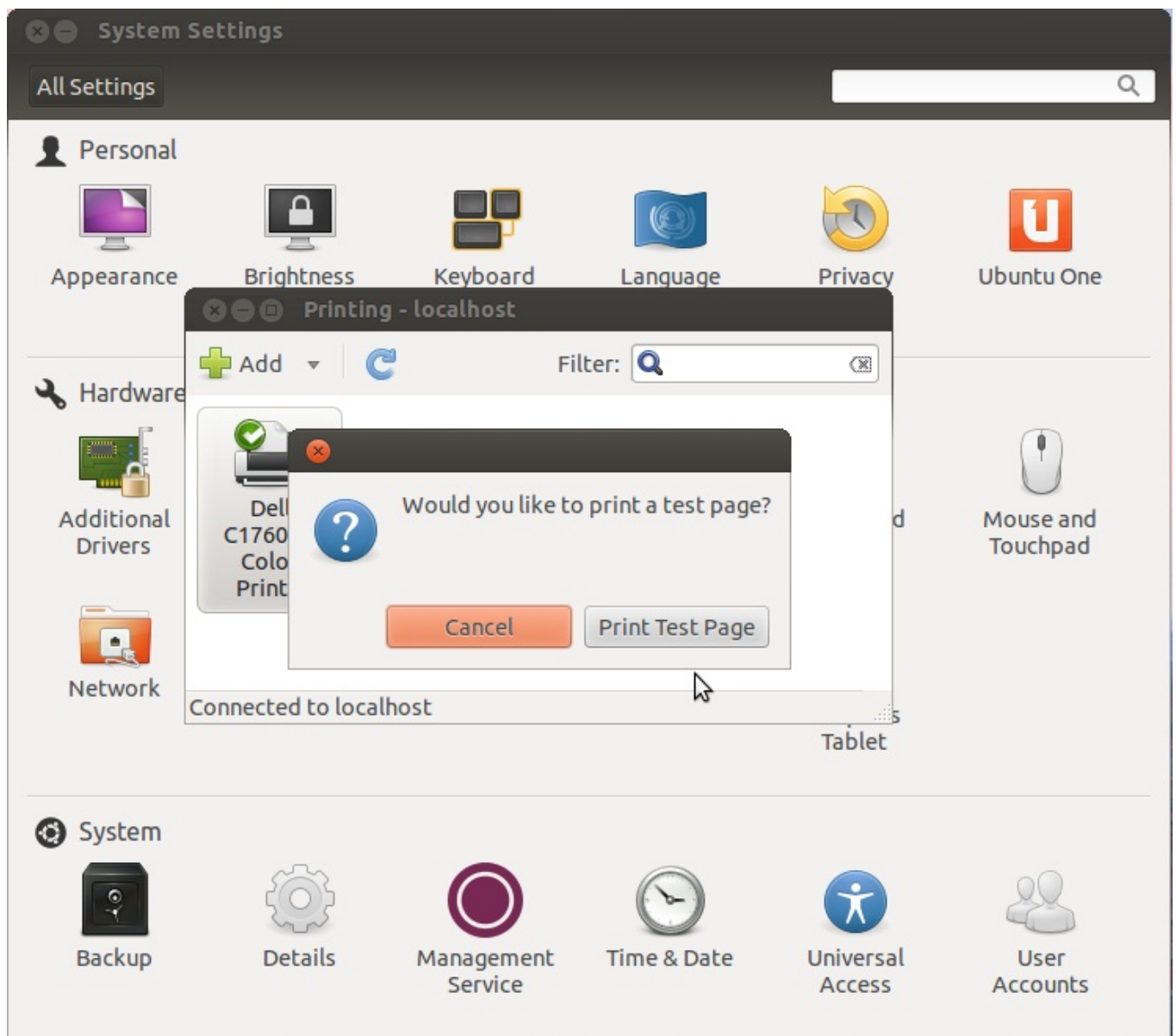
NOTE: Not all Dell Laser Printers support Linux or Ubuntu. In some cases it is possible to use the RPM file (available on the Dell support site for supported Printer models) but you would need to extract the PPD file from the driver package)

10. Then click Forward

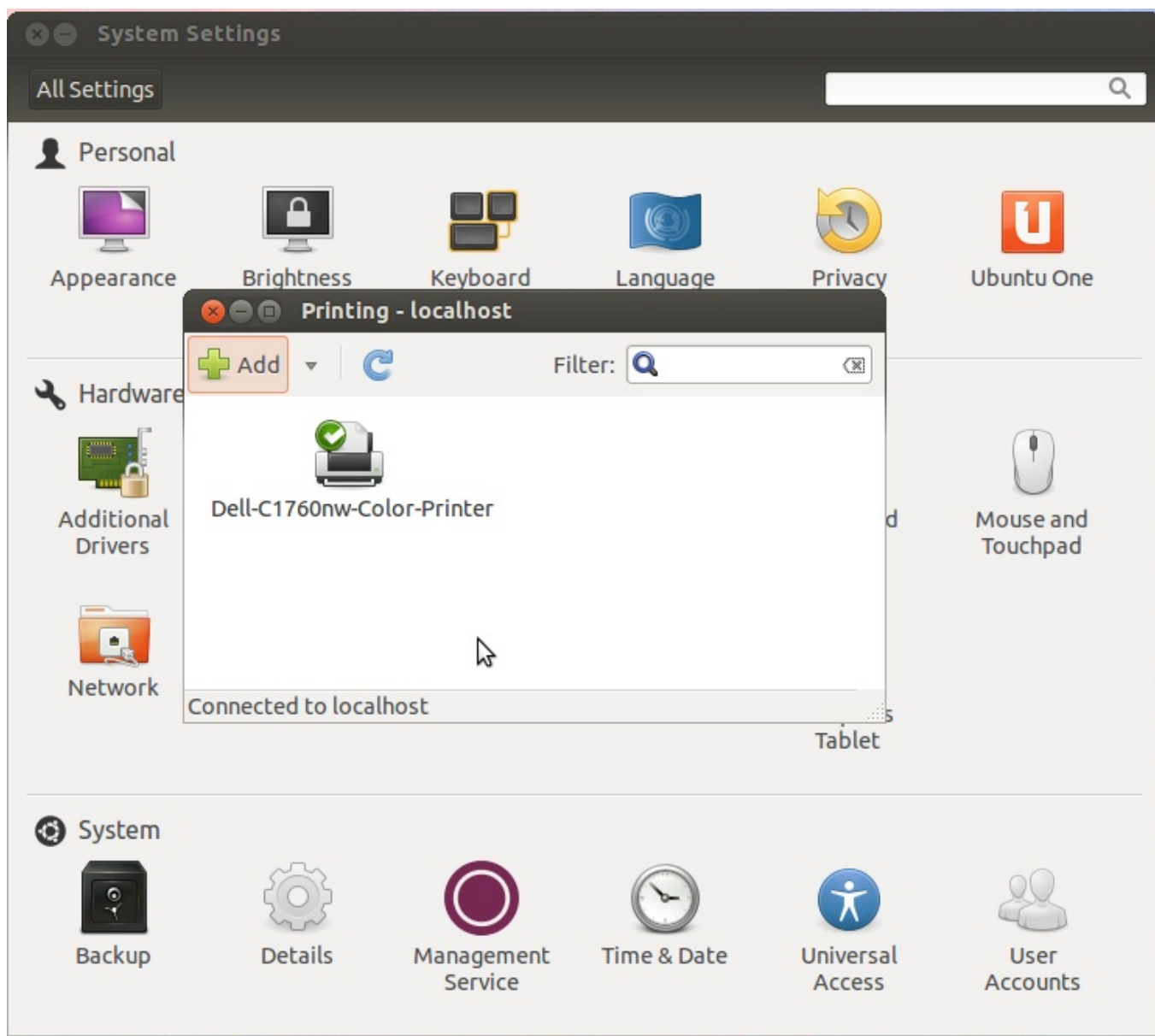


11. click apply

12. print a Test Page



13.The Printer should now be installed and displayed under the Printer configuration window



If you require further assistance or wish to give us feedback, please engage our technical team on [Twitter \(https://twitter.com/DellCaresPro\)](https://twitter.com/DellCaresPro).

Tweet

0

Follow @DellCaresPro

8,830 followers

[Back to Top](#)

Quick Tips content is self-published by the Dell Support Professionals who resolve issues daily. In order to achieve a speedy publication, Quick Tips may represent only partial solutions or work-arounds that are still in development or pending further proof of successfully resolving an issue. As such Quick Tips have not been reviewed, validated or approved by Dell and should be used with

appropriate caution. Dell shall not be liable for any loss, including but not limited to loss of data, loss of profit or loss of revenue, which customers may incur by following any procedure or advice set out in the Quick Tips.

Article ID: SLN284862

Last Date Modified: 10/21/2013 12:00 AM