

Canon Pixma MG3051 - Impresora todo en uno (4.0 hasta 8.0 ipm , 600 x 1200 ppp, Hi-Speed USB), blanco

# Bought at

[+]

## 1.2. Install in Ubuntu GNU/Linux from Canon

### 1.2.1. Drivers

Taken from (for printer and scanner):

[https://www.canon-europe.com/support/consumer\\_products/products/fax\\_\\_multifunctionals/inkjet/pixma\\_mg\\_series/pixma\\_mg3051.aspx?type=drivers&language=EN&os=Linux%20\(64-bit<sup>\[3\]</sup>\)](https://www.canon-europe.com/support/consumer_products/products/fax__multifunctionals/inkjet/pixma_mg_series/pixma_mg3051.aspx?type=drivers&language=EN&os=Linux%20(64-bit<sup>[3]</sup>))

### 1.2.2. Installation

Uncompress the deb files, and run with sudo the instal.sh script for each the scanner and printer .deb folders created for you.

The alternative way indicated elsewhere<sup>[4]</sup> to set up canon pixma printers, doesn't work for this printer, since MG3051 doesn't use scangearmp but scangearmp2 (note the number **2** at the end).

### 1.2.3. Print

In order to print, you can then add the printer in the Printers control menu in your Ubuntu Desktop environment.

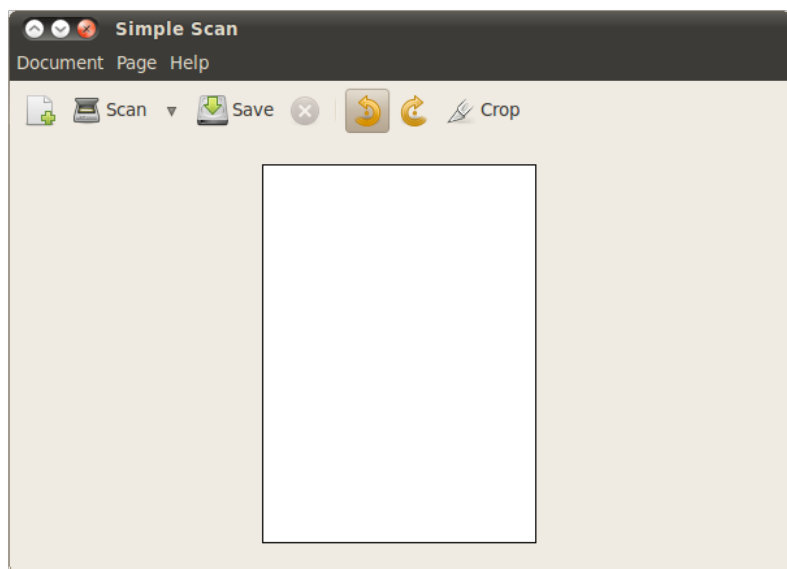
### 1.2.4. Scan

In order to scan, you can either run the **Simple Scan** program (since Ubuntu 18.04 LTS, it didn't work in Ubuntu 16.04 LTS), **gscan2pdf**, or the program **scangearmp2** (external drivers needed from Canon website).

#### 1.2.4.1. Simple Scan

Simple interface, intuitive, useful, and powerful. Recommended app. Install app from from repositories.

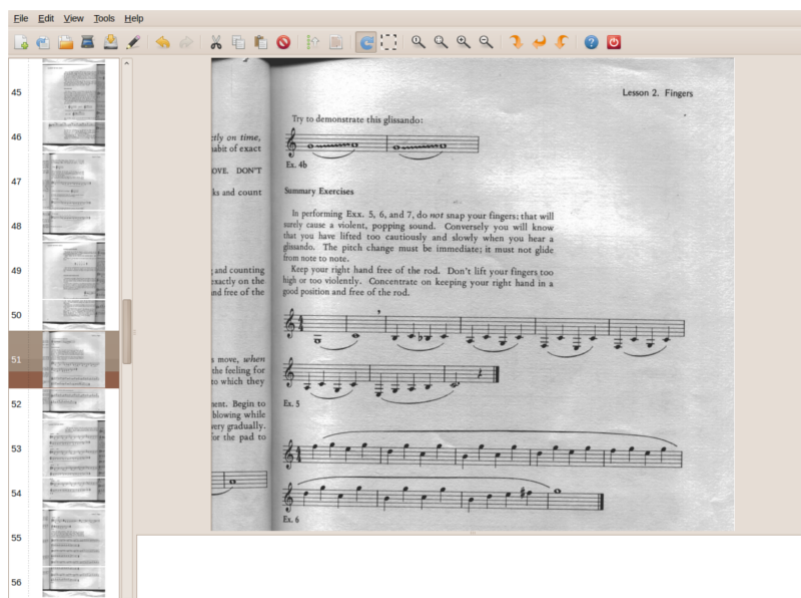
Maintained by Gnome in Gitalb<sup>[5]</sup>



## 1.2.4.2. gscan2pdf

Very useful app. Install it from repositories.

Website: <http://gscan2pdf.sourceforge.net/><sup>[6]</sup>

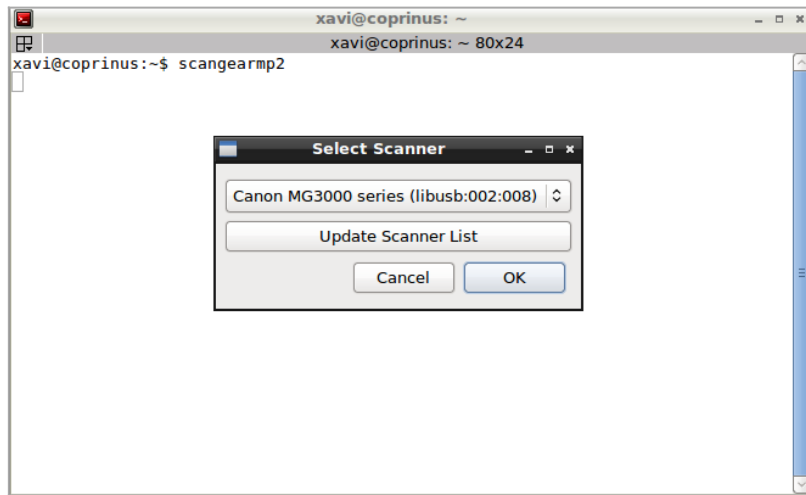


## 1.2.4.3. Scan Gear MP 2

In order to scan, you can run the program **scangearmp2**. Open a terminal window, and run this command

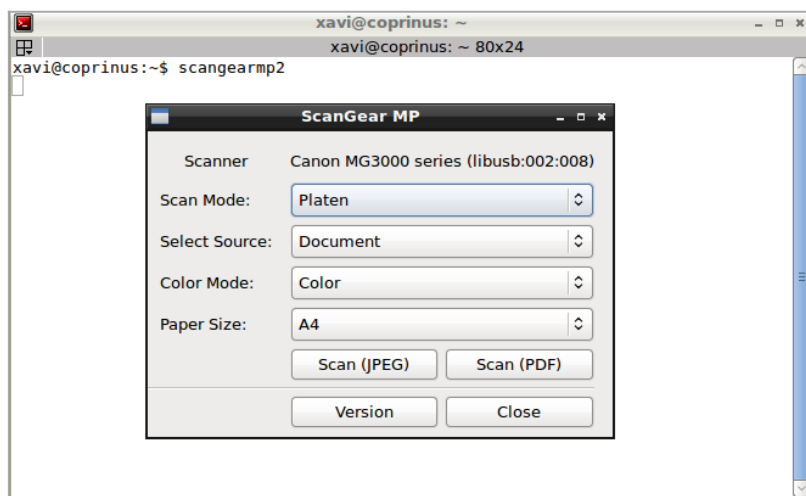


```
scangearmp2
```



Click to expand

Once the scanner is detected, you can click at OK, and then, the GUI to scan is shown:



Click to expand

This is version 3.40 of ScanGear MP:



Click to expand

**Note:**

Most GUI programs in GNU/Linux are setup to run scangearmp (the previous version, note that it misses then number **2** at the end), therefore, programs such as xsane, gimp, simple-scanner, etc. will not find the scanner in the scanners list, since they use scangearmp in the

backend.

## 1.3. Details

Marca	Canon
Series	MG3051
Peso del producto	3,5 Kg
Dimensiones del producto	30,6 x 14,5 x 42,6 cm
Número de modelo del producto	1346C026
Color	Blanco
Fabricante del procesador	Intel
Tipo de procesador	Ninguno
Número de procesadores	1
Tipo de memoria del ordenador	DDR3 SDRAM
Capacidad del disco duro	3100 MB
Interfaz del disco duro	Desconocido
Tipo de conexión inalámbrica	802.11b, 802.11g, 802.11n
Número de puertos USB 2.0	1
Número de puertos USB 3.0	1
Plataforma de Hardware	PC
Sistema operativo	none
Software incluido	Mac OS X 10.9 Mavericks

Soporte Canon:

[https://www.canon.es/support/consumer\\_products/contact\\_support/](https://www.canon.es/support/consumer_products/contact_support/)<sup>[7]</sup>

Llámenos al (+34) 9137 54 555

Available: lunes a viernes 08:00 a 20:00

---

<sup>[1]</sup> <https://www.pccomponentes.com/canon-pixma-mg3051-multifuncion-wifi>

<sup>[2]</sup> [https://www.amazon.es/gp/product/B011CH53Y0/ref=od\\_aui\\_detailpages00?ie=UTF8&psc=1](https://www.amazon.es/gp/product/B011CH53Y0/ref=od_aui_detailpages00?ie=UTF8&psc=1)

<sup>[3]</sup> [https://www.canon-europe.com/support/consumer\\_products/products/fax\\_multifunctionals/inkjet/pixma\\_mg\\_series/pixma\\_mg3051.aspx?type=drivers&language=EN&os=Linux%20\(64-bit](https://www.canon-europe.com/support/consumer_products/products/fax_multifunctionals/inkjet/pixma_mg_series/pixma_mg3051.aspx?type=drivers&language=EN&os=Linux%20(64-bit)

<sup>[4]</sup> <http://tipsonubuntu.com/2016/08/14/canon-printer-driver-scangear-mp-ubuntu-16-04/>

<sup>[5]</sup> <https://gitlab.gnome.org/GNOME/simple-scan>

<sup>[6]</sup> <http://gscan2pdf.sourceforge.net/>

<sup>[7]</sup> [https://www.canon.es/support/consumer\\_products/contact\\_support/](https://www.canon.es/support/consumer_products/contact_support/)