

Product description: <http://www.dell.com/ed/p/dell-2350d/pd>^[1]

Double sided laser printer, 1200x1200 dpi. USB2. (Second hand, 50€, + 20€ new toner)



Drivers

You can get Drivers at the Dell website:

1. GNU/Linux

<http://www.dell.com/support/home/us/en/04/product-support/product/dell-2350d-dn/drivers>^[2]

http://downloads.dell.com/FOLDER01322997M/1/2350_Linux.zip^[3] (0.8Mb)

2. Mac

<http://downloads.dell.com/FOLDER02727803M/1/2330%20Print%20driver.zip>^[4] (6Mb)

3. Windows

http://downloads.dell.com/FOLDER01048856M/1/Dell_2330_2350_ACH_Admin.exe^[5] (140Mb)

Some more info and links here:

<http://loadriver.com/2014/07/dell-2350ddn-mono-laser-printer-driver-download.html>^[6]

1.2. Installation on GNU/linux (Ubuntu 16.04)

I did a clean install with default drivers provided by Ubuntu 16.04, without adding any drivers from dell website or others (so different from the procedure I followed years ago when I install it for Ubuntu 14.04 - explained below).

And it seems to be using this driver:



Generic PCL 6/PCL XL Printer Foomatic/pxlcolor (recommended)

I just needed to set the printer options (through the standard Ubuntu printers GUI) to allow dual side printing (it was disabled by default).

And everything worked out of the box (apparently even better than in Ubuntu 14.04, when I got some spare pages printed too frequently with pdf comments about the driver or something). So everything looks good (even better): yay! 😊

1.3. Installation on GNU/linux (Ubuntu 14.04)

You need to install with the PPD provided in the compressed file with the drivers.

(There are other instructions at the Dell website, we we'd better skip them in our case:
[http://www.dell.com/support/article/us/en/19/SLN284862/en^{\[7\]}](http://www.dell.com/support/article/us/en/19/SLN284862/en))

For GNU/Linux (Ubuntu 14.04 in our case with Coprinus), you can follow the instrucctions that come along the ZIP file with the drivers:



Jul.02.10

Version v1.0

Package Name: PPD-Files-DKACH.tar.Z

Installation:

1. Download the file.

The tar file should be downloaded to the system you wish to install on. A "tmp" directory or in a "home" account is recommended. Please, remember to transfer in binary mode.

2. If the package file is compressed, uncompress the file via:

```
uncompress PPD-Files-DKACH.tar.Z
```

3. Untar the file in this directory via:

```
tar -xvf PPD-Files-DKACH.tar
```

4. Change to the ppd_file directory via:

```
cd ppd_files
```

5. Install the PPD Files.

- a. Linux Based CUPS

Logged in as root, run the install script:

```
./install_ppd.sh
```

See the Readme-CUPS.txt file for more information.

- b. Other CUPS installations

Copy the appropriate PPDs into the CUPS model directory and restart CUPS.

c. OpenOffice / StarOffice

See the Readme-OpenOffice.txt file for more information.

d. Other Applications

See the application's documentation.

Removing the PPD Files:

a. Common UNIX Print Subsystem (CUPS)

Delete the following files and restart CUPS.

/usr/share/cups/model/Dell_PPD/*

or

/usr/share/ppd/Dell_PPD/*

b. Printer Configuration (printtool or printconf) and Foomatic Utilities

Delete the following files.

/usr/share/foomatic/db/source/driver/Dell_PPD.xml

/usr/share/foomatic/db/source/opt/ppd-Dell_*

/usr/share/foomatic/db/source/printer/Dell_*

Notes:

1. File Encoding (ISO-88590-1 - UTF-8) for non-globalize PPD only

This package provides ISO-8859-1 and UTF-8 encoded PPDs. The file encoding affects how characters are displayed. Some applications need ISO8859-1 encoded PPDs, while others need UTF-8 encoded PPDs. Select the encoding that best fits your environment. If you select the wrong encoding for your application, either some characters will not show up or display correctly and/or the application will not create and modify queues correctly. If this occurs, try re-installing the PPD with the other encoding.

2. Supported Languages

Non-Globalize PPD

Globalized PPD

Brazilian Portuguese (pt)
English (en)
French (fr)
German (de)
Italian (it)
Spanish (es)

Brazilian Portuguese (pt)
English (en)
French (fr)
German (de)
Italian (it)
Spanish (es)
Japanese (ja)
Simplified Chinese (zh_CN)

3. Supported Operating Systems

Debian GNU/Linux 4.0
Linspire 6.0
Red Hat Enterprise Linux WS 3, 4, 5
SUSE Linux Enterprise Server 8, 9, 10
SUSE Linux Enterprise Desktop 10
openSUSE Linux 10.2, 10.3, 11.0
Red Flag Linux Desktop 6.0
Ubuntu 7.10
Ubuntu 8.04 LTS

4. File Names

Printer Type -----	Non-Globalize PPD -----	Globalize PPD -----
Dell 2330d Laser Printer Dell_2330d_Laser_Printer.ppd	Dell_2330d_Laser_Printer_en.ppd Dell_2330d_Laser_Printer_de.ppd Dell_2330d_Laser_Printer_es.ppd Dell_2330d_Laser_Printer_fr.ppd Dell_2330d_Laser_Printer_it.ppd Dell_2330d_Laser_Printer_pt.ppd	
Dell 2330dn Laser Printer Dell_2330dn_Laser_Printer.ppd	Dell_2330dn_Laser_Printer_en.ppd Dell_2330dn_Laser_Printer_de.ppd Dell_2330dn_Laser_Printer_es.ppd Dell_2330dn_Laser_Printer_fr.ppd Dell_2330dn_Laser_Printer_it.ppd Dell_2330dn_Laser_Printer_pt.ppd	
Dell 2350d Laser Printer	Dell_2350d_Laser_Printer_en.ppd	

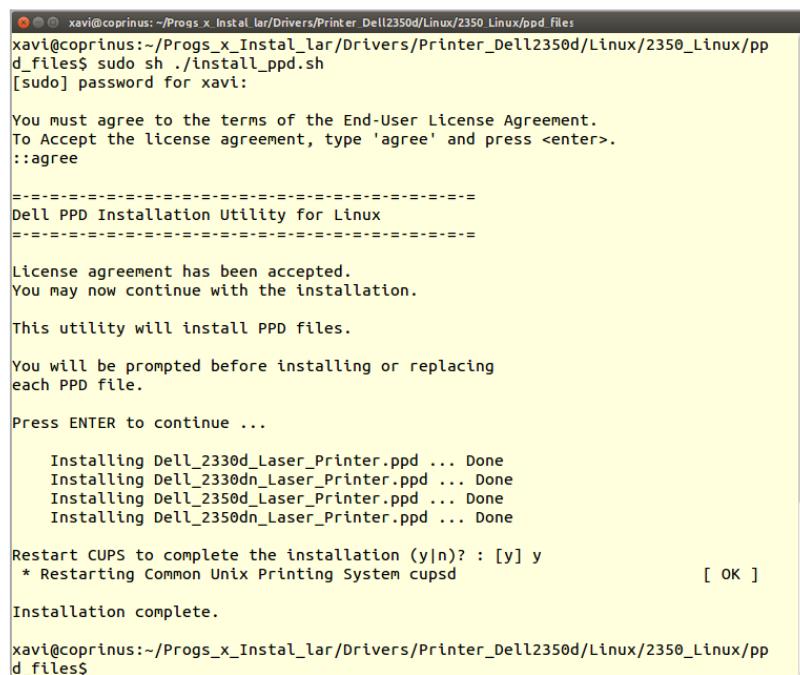
Dell_2350d_Laser_Printer.ppd

Dell_2350d_Laser_Printer_de.ppd
Dell_2350d_Laser_Printer_es.ppd
Dell_2350d_Laser_Printer_fr.ppd
Dell_2350d_Laser_Printer_it.ppd
Dell_2350d_Laser_Printer_pt.ppd

Dell 2350dn Laser Printer
Dell_2350dn_Laser_Printer.ppd

Dell_2350dn_Laser_Printer_en.ppd
Dell_2350dn_Laser_Printer_de.ppd
Dell_2350dn_Laser_Printer_es.ppd
Dell_2350dn_Laser_Printer_fr.ppd
Dell_2350dn_Laser_Printer_it.ppd
Dell_2350dn_Laser_Printer_pt.ppd

First run the `install_ppd.sh` script as `sudo`, and then, proceed to add a printer through the GUI utility in Ubuntu to add printers.



```
xavi@coprinus: ~/Progs_x_Instal_lar/Drivers/Printer_Dell2350d/Linux/2350_Linux/ppd_files
xavi@coprinus:~/Progs_x_Instal_lar/Drivers/Printer_Dell2350d/Linux/2350_Linux/ppd_files$ sudo sh ./install_ppd.sh
[sudo] password for xavi:

You must agree to the terms of the End-User License Agreement.
To Accept the license agreement, type 'agree' and press <enter>.
::agree

=====
Dell PPD Installation Utility for Linux
=====

License agreement has been accepted.
You may now continue with the installation.

This utility will install PPD files.

You will be prompted before installing or replacing
each PPD file.

Press ENTER to continue ...

    Installing Dell_2330d_Laser_Printer.ppd ... Done
    Installing Dell_2330dn_Laser_Printer.ppd ... Done
    Installing Dell_2350d_Laser_Printer.ppd ... Done
    Installing Dell_2350dn_Laser_Printer.ppd ... Done

Restart CUPS to complete the installation (y|n)? : [y] y
* Restarting Common Unix Printing System cupsd                [ OK ]

Installation complete.

xavi@coprinus:~/Progs_x_Instal_lar/Drivers/Printer_Dell2350d/Linux/2350_Linux/ppd_files$
```

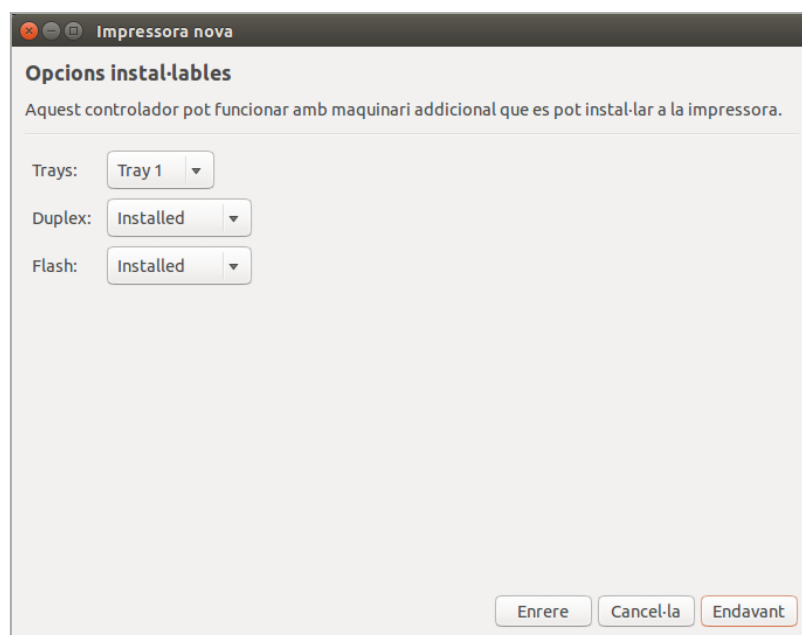
Click to expand

This way, the specific driver for the Dell 2350D is already installed in your system, and preselected for your printer in your computer. So happy path: minimum number of clicks, and printer set up and configured properly. Go to Menu > Printers > Add Printer (while having the printer on, and connected through USB), and select your model as it is recognized after a few seconds in the box at the left:



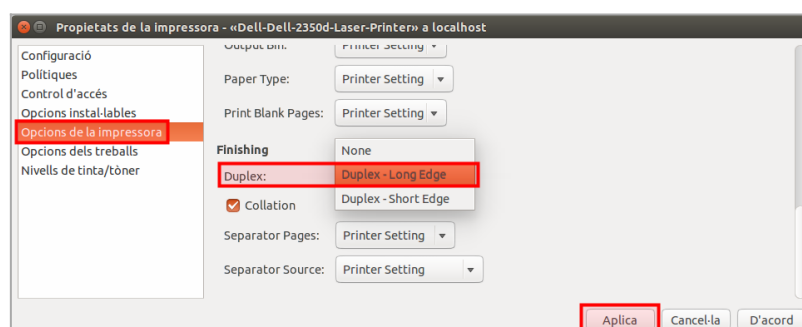
Click to expand

The next screen shows the default values for the usual settings with this printer (specially, the duplex unit is included):



Click to expand

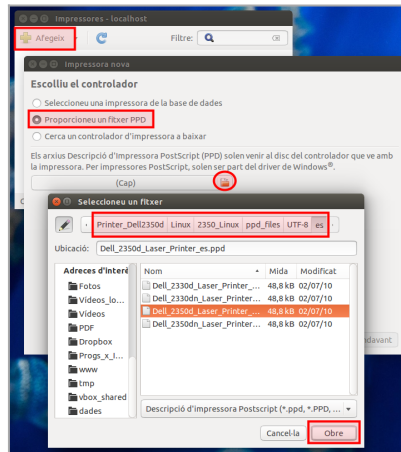
Last, you can click at properties for the printer configuration, so that you can enable by default the "duplex" printing:



Click to expand

Please Note:

In other cases, we would install the PPD directly at installation time, but in our case, this procedure did not work:



Click to expand

^[1] <http://www.dell.com/ed/p/dell-2350d/pd>

^[2] <http://www.dell.com/support/home/us/en/04/product-support/product/dell-2350d-dn/drivers>

^[3] http://downloads.dell.com/FOLDER01322997M/1/2350_Linux.zip

^[4] <http://downloads.dell.com/FOLDER02727803M/1/2330%20Print%20driver.zip>

^[5] http://downloads.dell.com/FOLDER01048856M/1/Dell_2330_2350_ACH_Admin.exe

^[6] <http://loadriver.com/2014/07/dell-2350ddn-mono-laser-printer-driver-download.html>

^[7] <http://www.dell.com/support/article/us/en/19/SLN284862/en>